



Airport Editor

09 / 2012



- Introduction

- **AddAirports is a advanced feature. The previous basic program is included with the CockpitStatus Software.**
- **This program makes it possible to Add, Modify + Delete Airport-Data for ALL CockpitStatus programs. You do not need anymore to change Airport Data manually.**
- **All CockpitStatus programs are using the same airport data File.**
- **Used for CockpitStatus, ATlasHold + SIMCON software that are not including such a facility..**
- **New features:**
 - **Load any Airport into the new [Edit Airport] Editor**
 - **Edit, change, modify, delete any data**
 - **Move, exchange Rwy-List-Position with 2 buttons [RwyUp] + [RwyDn]**
 - **Delete a Rwy + save data for modifying and eventual Re-inserting**
 - **Exchange modified data with actual airport or Rwy data**
 - **Automatic inserting of all actual data relating to the actual aircraft position. (or manual)**
 - **Airport: Latitude/Longitude, Elevation**
 - **Runway: Course, Latitude/Longitude**
 - **Logical Error control**
 - **All modifications are not changing the original Airport Database that can be exchanged with the new one.**



AddAirports

Install

09 / 2012

Freeware



- Unzip into **any** Folder where the following CockpitStatus programs are located.

- **CockpitStatus**
- **ATlasHold**
- **SIMCON**

*** Do not run AddAirports together with other CockpitStatus programs ! ***
Make a Desktop connection for fast access for: **AddAirports.exe**

- AddAirports is connecting FS with FSUIPC from Pete Dowson. (also not registered)
- The Program is staying ON TOP of the Desktop!
- Program is running on 32 Bit + 64 Bit machines.
- AddAirports is only working with internal Mathematic-Formulas based on Coordinates.
Credits to the work of Ed Williams and his Aviation Page.
- Credits to Paul Henty the Author of the FSUIPC Client DLL for .NET applications.
- If you encounter any difficulty pls. write a Feedback to: forstmeier@libero.it
You get immediate assistance!
- Check the Home-Page for updates at: <http://intrasystem.it/FSX/FSX.html>



Add-Change-Remove Apt Data

- Loading actual Airports – Click on [Load Apt's]
- **Adding a new airport** – use/copy the actual Aircraft Position Data as explained or Input known Data.
 - Insert data into the **Apt + Rwy Input Fields** – Click [Copy to Editor]
 - Apt-Data + Rwy-Data is copied into the Airport Editor
 - Clear Rwy Data – click [Clear Rwy Data] – Input Airport Fields are not deleted.
 - Input next Rwy Data
 - **Re-Edit** a Rwy or Airport Field – Left-Click on the Item in the Airport Editor Field – change data and Re-insert Rwy
 - In normal Input Mode you can't Re-Edit the Airport Field – only the Rwy-Fields.
 - Using the [Edit Airport] mode instead you can Re-Edit the Airport Field using the special [C] buttons.
 - **Exchange Rwy Position** – Right-Click on a Rwy, then use the [RwyUp] + [RwyDn] buttons.
 - When terminated you can make a Distance Test. Input Icao [Dest Icao] and click on [Test Distance].
 - Save new airport – [Add/Save Apt to Airport List]. Data added at the End of the Airport List.
 - You can then change data using the [Edit Airport] Mode. Re-Call the Apt at the END of the 'Airport List'.

If the Airport Editor is 'empty' you could use the 'Edit Airport' Mode for inserting a complete New Airport! (less restricted)

- **Changing existing Airports in [Airport List] – Select [Edit Airport] Mode**
 - Click on a Airport Item in the 'Airport List'. Airport is marked as 'deleted' and copied into the Airport Editor.
 - If NOT in 'Edit Airport' Mode you can Delete a Airport Record. Just click on a Airport Record.
 - Confirm Edit this Airport (yes). If you do not want to edit this Record just click on [Add/Save Apt to Airport List]
 - This record is added at the End of the Airport List and same Airport is deleted from the 'Apts. Deleted' List!
 - [Clear Rwy Data] + [Copy to Editor] are not used here. [Clear Rwy Data] is then the [Delete Rwy] Data.
 - **Delete a Rwy.** Copy Rwy-Data into Input-Fields then use the [Delete Rwy] Button.
 - You can't delete the 1. Airport data Record but you can change the Airport Data Field.
 - Copy Field-Data back into the Airport Editor – Use the red [C] Buttons. Copy into Input-Fields, click on a Editor Item.
 - When finished proceed as explained on Top.
- **[Create a New Airport File] Button**
 - 1) After a error-Check a new sorted AirportFile 'New_apt.txt' File is created.
 - 2) A special Label is appearing – 'REPLACE/Exchange New_apt.txt with original Apt-File ?
If you confirm you create a new original apt-File in automatic. Otherwise you have to do it manually. Attention: This is the only moment you can do it in automatic. Any other Click is cancelling this option.





Adding a new Airport

Actual
Position
Data while
moving
aircraft.

Elevation Agl

Latitude

Longitude

Add Airports (© Raimund Forstmeier) x86

FS Version: - Icao: 13054

Buttons: Edit Airport, Rwy Up, Rwy Dn, Create New 'apts' File (Sorted)

Help

Airport Editor-List

Icao	Airport / Rwy	Course	Freq	Elev (ft)
YYYY	TEST			100
10		180	110.15	46

Editor List Items

- 1) place aircraft near Tower - Input Icao + Airport-Name
- 2) Click on **Elevation** + **Lat** + **Lon** labels – copy data
- 3) place aircraft on a Rwy-Start – Centered -
- 4) Input Rwy-ID + Freq. If any - Click on **Course** label
- 5) Click on Rwy-Data – **Latitude** + **Lon** labels – copy
- 6) Click on [Test Distance] – check distance to other Icao.
- 7) Click on [Copy to Editor] (copy into Editor-List)
- 8) Change aircraft position. Start with next Rwy.

Buttons: Load Apt's, 13054

Airport List

00CR	????
	04
	22
00M	THIGP
	16
	34
00R	LIVIN
	12
	30

Calculate any Distance

Icao: to

Buttons: Distance, nm, km

Buttons: Clear Rwy Data, Clear Editor, Copy to Editor, Add/Save Apt to Airport List

Save Apt-Record with [Add/SaveApt]. (saved into 'Airport List' at the end.)

Right Click on a
Editor list item
then use **RwyUp**
+ **RwyDn** buttons

Load Apt's

Click on a Airport
in Airport List.
In Edit Mode
Edit Airport +
mark as deleted.

Not in Edit Mode
Mark as deleted

**Cancel a Rwy-
Editor List Item**
Left Click on a
Rwy item. Then
use [Clear Rwy] or
[Delete Rwy]

- Before you copy data into the Editor List click on (1) Test Distance for a visual test.
Input a Icao (example: EDDB) that should be at a approx. distance from your new Airport or Rwy.
When you create a new sorted Apt-File you must rename 'New_apts.txt' into 'apts.txt' for using the new file.
• Click on [Create New 'apts' File sorted] for creating the New_apts.txt file ' .



The new Apt Editor

09 / 2012



1. Click on the Apt ICAO Item in the Airport List. (lowg)

This image is showing Apt **LOWG** in **EDIT** Mode. Apt is marked deleted. Any change is possible. Click on a Editor-List item and copy data into the Input-Fields. **Re-Copy** into Editor using the **RED [C]** Buttons. (when in Edit Mode) **Deleting** a Rwy is done using the [Delete Rwy] button. **Rwy-List-sequence** is adjusted using the [RwyUp] + [RwyDn] buttons. **Save Apt-Record** with [Add/Save Apt]. Rec **saved at the end** of Airport List. (Apt's deleted Item **LOWG** is cancelled) **EXIT ALL** just Exit Edit Mode. **You should RE-Insert** this Rec. Click on [Apt's deleted] Apt and Re-insert Apt. (if not, Rec is lost)

Add Airports (© Raimund Forstmeier) x86

FS Version: FSX Icao: **13054** **Exit Edit** **Rwy Up** **Rwy Dn**

Help **Create New 'apts' File (Sorted)**

Airport Editor-List

Icao	Airport / Rwy	Course	Freq	Elev (ft)
LOWG	GRAZ			
	17C	167	---	1120
				46.978128

This is the Airport Editor
Click on a item + copy into Input Fields.
Right-Click on Item then use [RwyUp] + [RwyDn] buttons.

Below the Apt + Rwy Input Fields in Editor Mode.
Edit Fields – Re-Insert into Editor using the **[C]** buttons.
Save Record [Add/Save Apt...]

Icao	Airport Name	Elevation	Latitude (6 dec)	Longitude (6 dec)
LOWG	GRAZ	1120	46.993056	15.439167

Rwy Data

Rwy - ID	Course	Frequency
35C	347	110.90

Rwy Data

Latitude (6 dec)	Longitude (6 dec)
46.978128	15.443187

Test Distance

Dest Icao: **EDDB** **Help**

332 nm
614 km

Delete Rwy **Clear Editor** **Copy to Editor** **Add/Save Apt to Airport List**

Apt's deleted

LOWG GRAZ

Calculate any Distance

Icao:
to:
Distance
nm
km

[Clear Editor] + [Copy to Editor] not used in Edit Mode.

Inserting Field data in automatic, click on Labels:

Airport Data: Elevation – Latitude – Longitude

Rwy Data: Course – Latitude - Longitude

[Create New 'apts' File] is never changing your orig. 'apts.txt' File. You must exchange 'New_apts.txt' file with your original 'apts.txt' file for security.

Actual aircraft Position + Data while moving aircraft.

Elevation

Elevation Agl

Latitude

Longitude

Deleted Apt's are only marked as deleted. You can Re-Insert Apt's.



AddAirports

09 / 2012

Remember



Make a Back-Up copy of your actual apts.txt File.

- When you change the Airport File and Replace the New File with the original File:

Copy the New original apts.txt File to the Folders where other CockpitStatus programs are located. CockpitStatus, ATlasHold, Simcon.

- When you create a New 'apts' File and forget to Replace the actual File with the New one just restart the [Create New 'apts' File] procedure.
- **When you edit a existing Airport this Apt is marked deleted** (Apt's deleted) and the Airport List Item Airport p.e. KJFK has changed into KJFK ????.
 - if you don't save again this Record it remains marked as 'deleted'.
Only when you Exit 'Edit Airport' you can Re-Insert this record into the Airport List.
Just click on 'Apt's deleted List' and confirm.
 - if you save this Record with or without changes this Rec is Added at the END of the List and canceled in the 'Apt's deleted List. The orig. Apt-List-Item is still 'KJFK ????'.

Just make some tests in the beginning. The program is controlling logical errors.



CockpitStatus

including ATlasHold



CockpitStatus (© Raimund Forstmeier) v. 1.3 Licensed

Comp HDG 347.00 **VOR** OEG **MVar** E2.8°

Arm AT 0 **DME** 00.6 nm

ALT 1267 **NDB** GRZ

BOEING

168 **Grd** 348

1099 **ILS** 347

Nav >1°

Adf 180 >

Rwy 35C **Hdg** 347 **Dist** 0.4 **Rwy°** 0.5 **R-Radial°** Align Rwy

Com1 128.30 **stby** 128.25 **Com2** 127.80 **stby** 127.90

Nav1 110.90 **Stby** 110.90 **Nav2** 110.60 **Stby** 116.80

ADF 290 **BOEING** **XPN** 1200

4 Jet

☒ **Master Avionic** ☒ **Battery** ☐ **Brakes** ☐ **Pause** ☐ **Spoiler**

☐ **AP** ☐ **FD** ☐ **Hdg** ☐ **Alt** ☐ **Nav** ☐ **Apr** ☐ **IAS** ☐ **Nav/Gps**

Lights ☐ **Naviga** ☒ **Panel** ☒ **Beacon** ☐ **Recog** ☐ **Wing**

☐ **Land** ☐ **Taxi** ☐ **Strobes** ☐ **Cabin** ☒ **Logo**

Fuel Cpty: 57164 56956 100% **FUEL** 208

FSX **update** **Open Fuel View** x86

35C **347** **110.90**

Icao **Find Airport** **ILS** **Load Apt's** **13053**

Icao **Airport / Rwy** **Course** **Freq** **Elev (ft)**

LOWG 81 nm **150** km **LOWW**

LOWGLOWW.PLN

flp-pln

Icao

to

Distance

LGKRLIPU . PLN
LICJGMW . PLN
LIPHLIPB . PLN
LIPUEGKA . PLN
LIPZEGLL . PLN
LIPZLIRE . PLN
LIRFEGLL . PLN
LIRFLICJ . PLN
LIRFLIPZ . PLN
LOWGRYMN . PLN
LOWGEDDB . PLN
LOWEGLL . PLN
LOWKANE . PLN
LOWGLJMB . PLN
LOWLOWI . PLN
LOWLOWK . PLN
LOWGLOWS . PLN
LOWGLOWW . PLN
LOWGLPMA . PLN
LOWLSZH . PLN

copy a Flight-Plan into your Cockpit GPS

H **FLP Path** **C:\Documents and Settings\Utente\Documenti\File di** **Flight Plan**

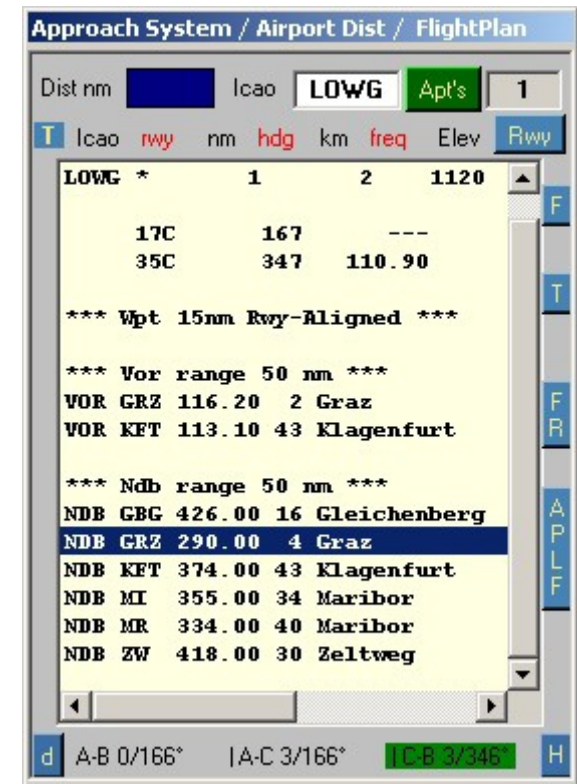


ATlasHold

included with CockpitStatus



Connect AtlasHold to your Joystick.

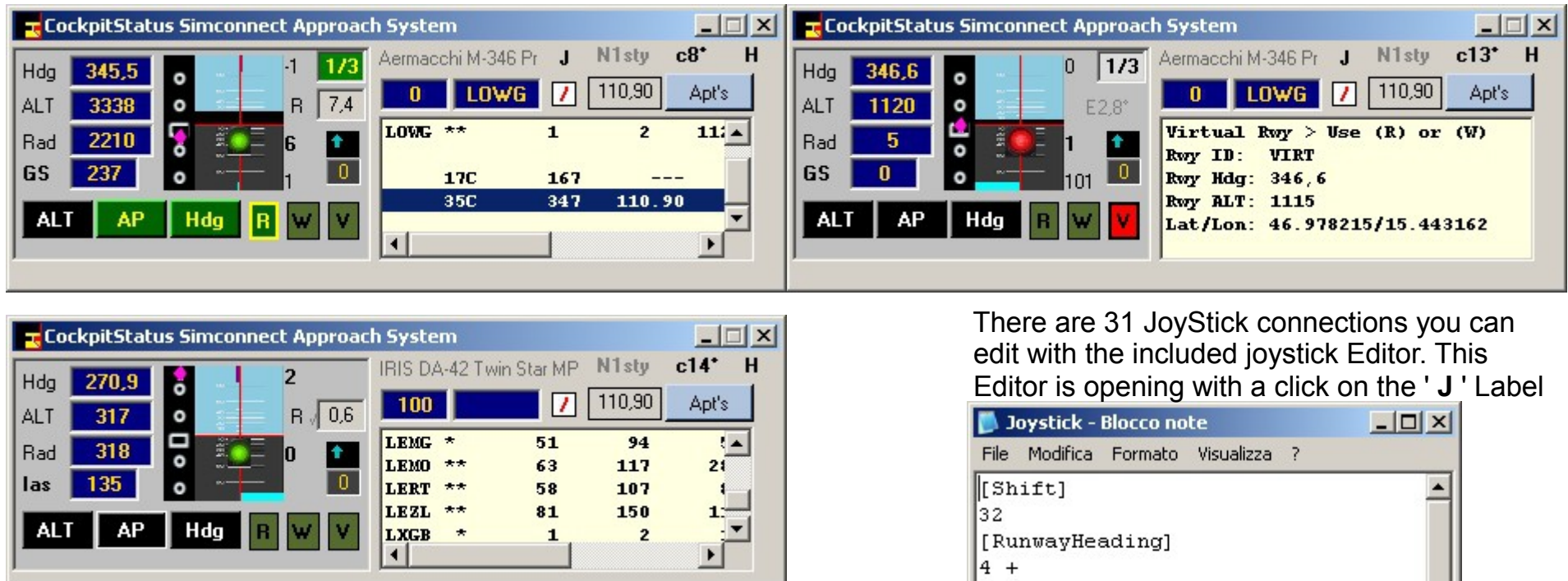




SIMCON

FSX Simconnect – Approach System

Fuel, Joystick connection, automatic Mouse-Click Interface



There are 31 JoyStick connections you can edit with the included joystick Editor. This Editor is opening with a click on the 'J' Label

The new Mouse-Click Interface is registering your Clicks. You create Mouse-Click files for Starting Engines or Shut off engines, Lights or anything else just with one Click. It seems as the Co-Pilot is moving his hand over the Panel. Separate Mouse-Click selections for 1+2 way switches, 3 way switches, Up, Middle, Down and multiple left + right clicks.

